

Beam Steerable RFID Antenna IDA-3100

Tyco Retail Solutions provides retailers with real-time visibility to their inventory and assets to help improve operations, optimize profitability and create memorable shopper experiences.

The Sensormatic IDA-3100 RFID antenna was designed with retail environments in mind. The low-profile form factor blends easily with store interiors and withstands harsh retail environments.

Software controlled beam steering delivers true directional read capability with a single antenna, enabling real-time capture of RFID tag movement. Beam steering customization allows the antenna to be configured to perform optimally in a range of installations; creating superior read zones in fitting rooms, transition areas and stockrooms.

The antenna mounts to flat surfaces including walls and ceilings with four concealed screws. A single cable connects the antenna to a Sensormatic IDX-2000 or 8000 Multipurpose RFID reader and can be fully concealed. Beam steering enables optimal tag reading from its flat position.

Compatible with standard UHF EPC Gen2 standard RFID tags, the IDA-3100 antenna reads tags accurately across a wide variety of product types including apparel, footwear, books, electronics and more.

In the fitting room - retailers can capture actionable data in real-time to monitor item location for visibility into shrink and on-floor availability. Additionally, visibility of tags in a fitting room provides opportunities for interaction with store associates as well as advanced merchandizing and loyalty applications.

In transition areas - beam steering technology enables visibility to the direction a tag is moving without needing multiple antennas; enabling true item location, faster receiving and transfers and improved item location accuracy with lower hardware cost.

In the stock room - this antenna supports numerous RFID workflows, from receiving small shipments, transferring merchandise items to another location and writing new RFID tags with precision.

Retailer Values

- // Low-profile, retail-friendly design with discreet hidden mounting features for fitting rooms, transition areas and stockrooms
- // Beam steering technology allows true sensing of tag directional movement with a single antenna
- // Software control allows beam customization for various wall or ceiling reading challenges
- // Compatible with EPC Gen2 standard RFID tags
- // Durable construction withstands demanding retail environments
- // Automatically recognized by Sensormatic IDX Multi-purpose RFID readers for built-in compatibility and ease of operation

Product Codes

IDA-3100-NA-RS

(North America)
902-928MHz, RP-SMA

IDA-3100-EU-RS

(Europe)
865-868MHz, RP-SMA

Product Compatibility

Sensormatic IDX-2000 2-port
RFID Reader

Sensormatic IDX-8000 8-port
RFID Reader

TrueVUE™ Software

EPC Gen2 standard RFID Tags

Specifications

Height 33.8cm (13.32in)

Width 37.2cm (14.63in)

Depth 1.9cm (0.75in)

Weight 1.2kg (2.6lbs)

Housing White, high-impact ABS
UV Stabilized

Cable

Length 1.22m (4ft)

Connector RP-SMA

Mounting

4 x #8 sheet metal screws included
Snap-on screw covers

Functionality

Frequency Bands

FCC band (NA) 902-928 MHz

ETSI band (EU) 865-868 MHz

Gain 6 dBiL Center Beam
4 dBiL Left and Right Beams

Beam Pattern 30dBm width <=50°
Polarization RHCP

Max VSWR (free space) <2.0
Impedance (nominal) 50 Ohm

Max Conducted Input Power 2W*
*Maximum legal input power determined by
in-country regulatory requirements

DC Resistance 10K Ohm

Environmental Constraints

Operating Temperature

-20° to +50°C (-4° to 122°F)

Storage

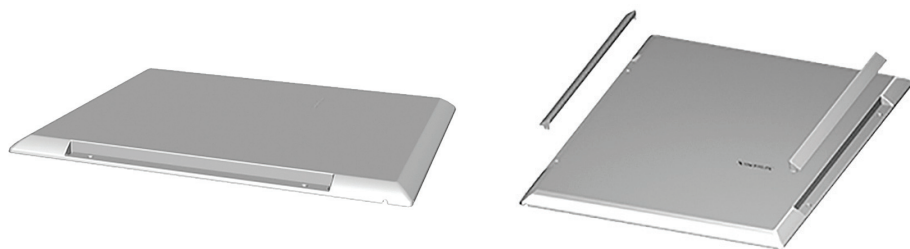
-20° to +70°C (-4° to 158°F)

Environmental Rating IP54

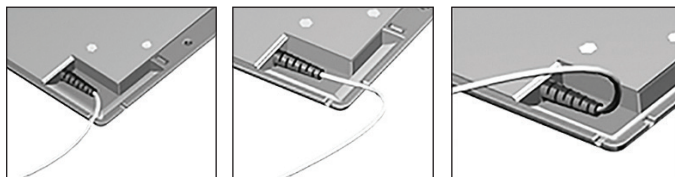
CE This product is in conformity with
RoHS II Directive 2011/65/EU and REACH
Substances of Very High Concern as
defined in Regulation (EC) No 1907/2006
and subsequent amendments to both.



IDA-3100 with cable



snap-on screw covers



cable routing options

